



We would like to introduce you to Joanna, the new parent representative for Sparkle and the children's centres ✨

Jo will be collating views, issues and ideas from families and sharing these with the management board. You can contact Jo on

sparkleparentrepio@gmail.com 📧

Find out more about Jo and her role here
[Parent Representative \(sparkleappeal.org\)](http://Parent Representative (sparkleappeal.org))

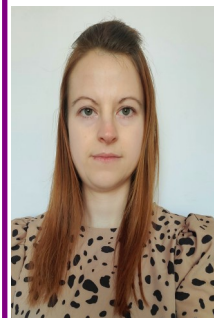


Sunday 24th April we held our Easter Fun Day at Serennu, where we welcomed families from all over Gwent.

Massive Thank You to Greenmeadow Community Farm, Wales Tang Soo Do, Newport Live, Gwent Police, Medicinema and Newport County AFC for joining us on the day.

It was a fantastic day, Thank you all for coming.

Welcome to our New Children Centre Team Lead
Claire Flagg.



'I am very excited to be joining the team and working at the three children centres across Gwent. I look forward to meeting and getting to know everyone. I have had previous experience of managing childcare settings and I am looking forward to this new and exciting job role.'

Little Star's is Back!

Our Little Stars will be held at Rassau Resource Community Centre in Ebbw Vale from Wednesday 8th June 1.30pm-3pm.

If you would like to come along to these session, please contact me for a registration form before attending.



Little Stars

*Term time only
Stay and play parent / carer
sessions for children
aged 0-4 years
Cost of the session £5 per family

Would you like the
opportunity to meet
with other parents and
young children in a safe,
friendly and supportive
environment?

**If yes, then Sparkle's Little Stars sessions
are for you and your family!**

The Little Stars North group is a great opportunity
for parents / carers of children with a disability
and / or a developmental difficulty, that reside in
Blaenau Gwent, North Monmouthshire,
or North Torfaen.

STARTING 8TH JUNE 2022



"When and where is Little Stars North?"

Wednesday 1.30pm – 3pm
@ Rassau Resource Community
Centre

"What can we do as a family?"

In Little Stars families can:

- Have fun with their child, using a range of toys to meet their individual needs
- Meet other parents/carers whose children have similar needs
- Receive informal support from other parents / carers
- Have the opportunity to be sign-posted to additional Sparkle support services



For more information
about Sparkle Leisure
Services, or to book a
place please contact
the Sparkle office on
01633 748093, or you can
email the Leisure Team at

ABB.sparkleactivities@wales.nhs.uk

The weekend is almost here!
What have you got planned?

Here in the Sparkle office, we can't wait for the big June bank holiday and if you're joining in the Jubilee celebrations why not support us in #HelpingSpecialChildrenShine by fundraising!

Whether having a grand celebration with a street party for the community or a smaller Royal tea party for family and friends. We'd love to hear your ideas and see how we can help!

Contact us at:
Fundraising@SparkleAppeal.org



Fundraise with Sparkle Appeal this Jubilee Weekend

Throw a Royal-tea party
Bucket collect at a streetparty
Host a dinner fit for the Queen!

Contact us at:
Fundraising@SparkleAppeal.com

Thank you very much to Waitrose & Partners Monmouth for their generous donation to Sparkle



SNAP Cymru Drop in Session

Offering impartial advice on educational concerns empowering parents to advocate for their child

When?

17th May, 14th June & 12th July
10am-12:30pm

Where?

Serennu Centre, Rogerstone
(NP10 9LY)

All are welcome, you don't need to book in advance!

For more information about SNAP Cymru, visit our website
www.snapcymru.org

THANK YOU Arnold Clark Community Fund



We would like to say a massive

THANK YOU to the Arnold Clark Community Fund

They kindly awarded Sparkle £1,000 towards supporting children and young people with disabilities and/or developmental difficulties ✨
#ArnoldClarkCommunityFund

Sign of the Month



SPRING

Working bunched hand (palm back, pointing in) behind supporting flat hand (palm back, pointing in); then working hand swivels at wrist to open hand (palm back, pointing up).

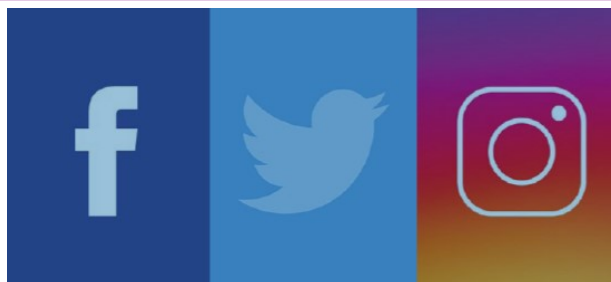
Diagram and description from Signalong

Sparkle Social Media

Facebook @sparkleAppeal

Twitter @sparkleappeal

Instagram @sparkleappealofficial



Bwrdd Iechyd Prifysgol
Aneurin Bevan
University Health Board