

News from Serennu

May 2020

Volume 8 Issue 5



Rainbows everywhere.



Serennu Children's Centre has been transformed with rainbows on display everywhere. Many of our children and young people have completed fantastic coloured drawings and they kindly sent them across for staff at Serennu to see. We decided that we would print the pictures to place on windows around the centre and they really have made staff and patients smile. Thank you to everyone who has sent a picture already and if anyone would also like to share their masterpiece for us to display, please just get in touch. Here are a few of the drawings we have received.



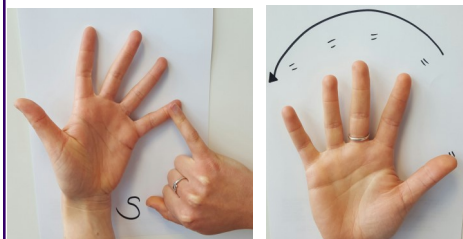
Due to the current situation with COVID 19, many staff normally based at Serennu Children's Centre are either working from home supporting families, or have been redeployed into other job roles caring for

patients at various hospitals and NHS premises. We miss seeing these lovely people every day. To thank all NHS and Key Working staff we have fabulous bows displayed at the centre to celebrate the fantastic work that is being achieved. Claire Whitfield is an Administration Assistant at Serennu Children's Centre, and she made these bright and jolly bows that we will keep on show until the staff that are not currently with us, are back with their teams at Serennu. Thank you Claire for taking time to create this display. Please stay safe everyone, we look forward to seeing you all back at Serennu as soon as possible.



If you would like to be kept up to date with activities, events, forums and support groups being held at Serennu and in the local area please email or call: Family.liaison.ABB@wales.nhs.uk / 01633748013 to be included on the mailing list.

Sign of the Month



Serennu

First let little finger of right hand touch little finger of left hand, then working open hand (palm forward, pointing up), make small outward circles with fingers fluttering at appropriate height.

For more signs, information and resources, please see www.signalong.org.uk or talk to your Speech and Language Therapist

Recently, we have been offered many generous donations of Easter Eggs at Serennu Centre, and they

were all very gratefully received. Because of the current situation, we did not have as many families visiting Serennu during April and so, with permission from the donors, the chocolate eggs were shared between children and young people who did have scheduled appointments with us, and also shared with families working with care co-ordinators/ support services, various local children's residential homes and external services that also support families. We would

like to say thank you to everybody who kindly gave donations. The chocolate eggs were appreciated by everybody receiving them.



Even Serennu transport is now displaying rainbows. If you are using hospital transport in the near future for your appointment at Serennu Centre, you may have Ian collect you with his decorated ambulance. Ian is enjoying driving his colourful transport and it is definitely making people smile. Drive safely Ian.



Both the Serennu and Sparkle administration teams are still operational and working from Serennu Children's Centre. The Family Liaison Service is also still available for families and professionals to access. If you have any queries or concerns, or would like any information that we could assist with, please do not hesitate to be in touch, it would be our pleasure to help.

We are here if you need us and you can reach us on :

Serennu Admin Team 01633 748000

Sparkle admin team 01633 748091

Family Liaison Service 01633 748013 or familyliaison.abb@wales.nhs.uk

Thank you Andy

Every month we produce the Serennu Children's Centre newsletter and this is emailed to families and professionals to offer information and updates on what is taking place at Serennu. However, for visitors to Serennu and also for information events in the community, it is helpful to be able to offer a hardcopy of our newsletter.

Andy, owner of Honeycomb Print Services, has been a supporter of Sparkle for many years and he very kindly prints and delivers our hardcopy versions each month. We would like to thank Andy for his continued support and we look forward to working closely with him and Honeycomb Print Services in the future.

You can contact Honeycomb Print on 01873 858047 or info@honeycombprint.com

Stay Safe Everyone

In these unprecedented and uncertain times, please keep safe and well and we look forward to seeing you all at our centre in the future.

2:6 challenge



We often hear fantastic news stories but recently we have been chatting with two very special young ladies who each decided to take on the 2:6 challenge to raise funds for the Sparkle Emergency Appeal. Ruby Atkins successfully completed a 2.6 mile walk around the local area where she lives and Cariad Payne completed 26 laps of an obstacle course set up in her garden. Both smashed their fundraising targets and we would like to congratulate them both on their fantastic achievements.



Storms don't
Last forever



Stay Safe ❤️
Love From KOBEXX



Bwrdd Iechyd Prifysgol
Aneurin Bevan
University Health Board