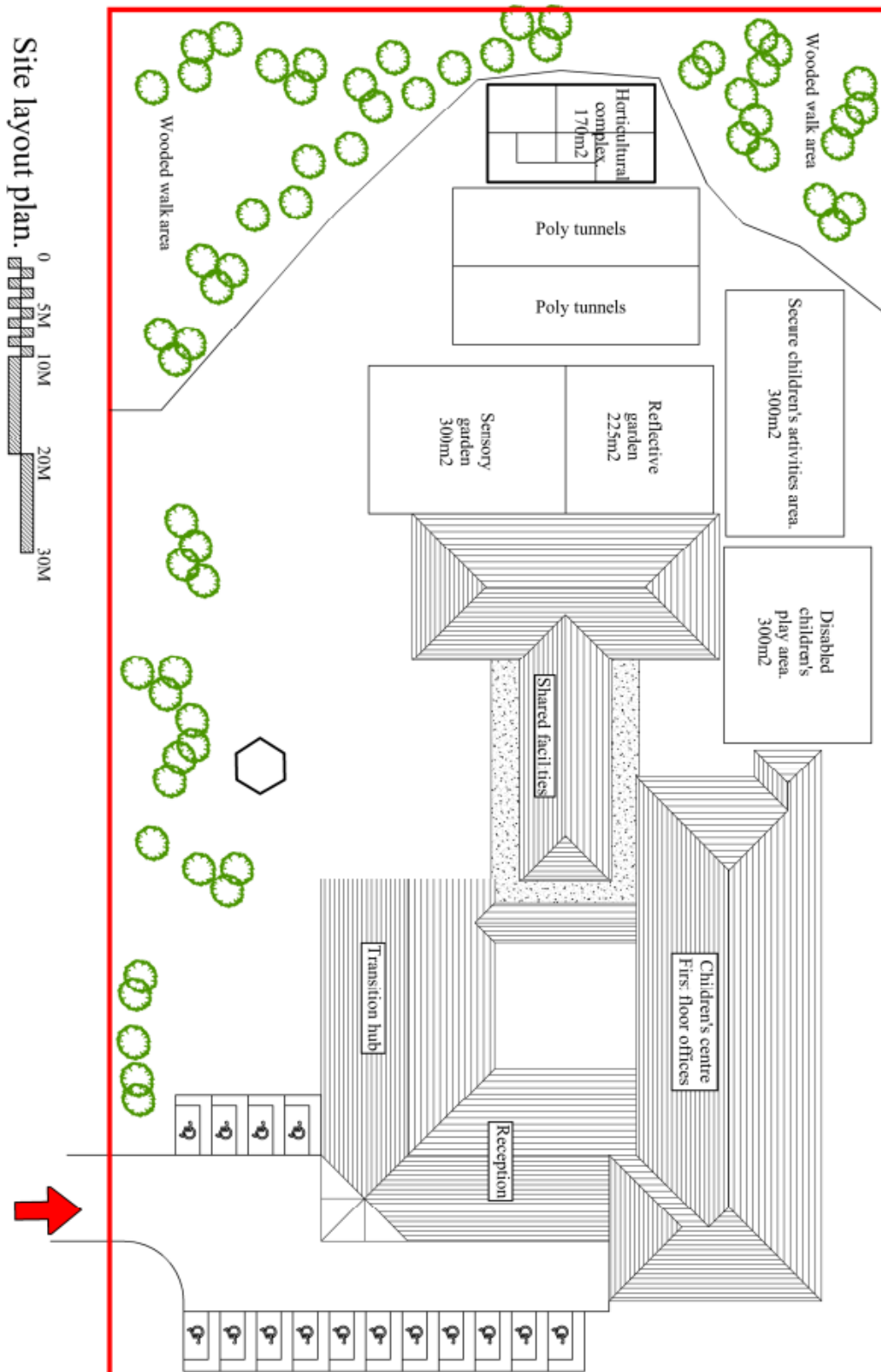


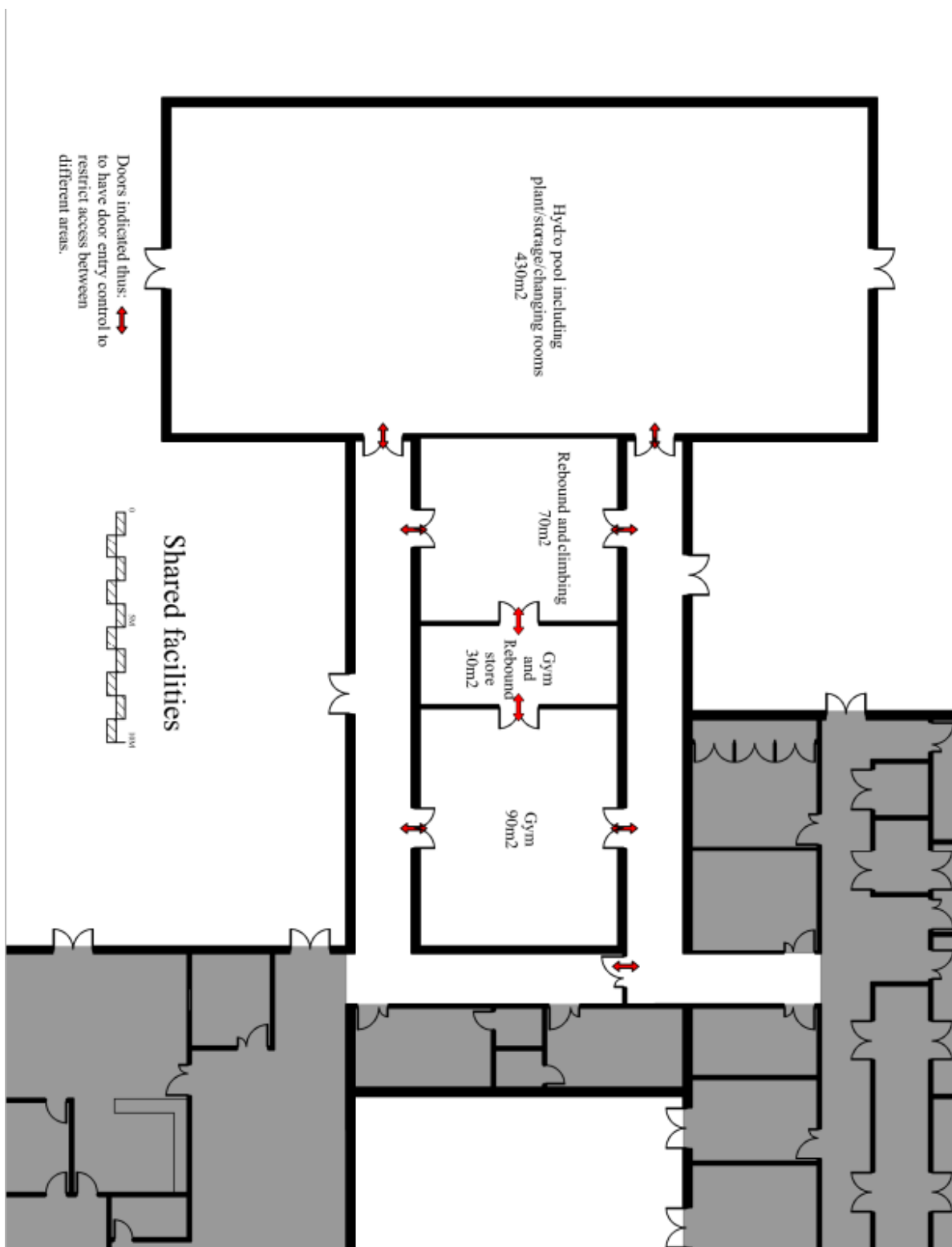
Proposed Plans for Integrated Children's Centre with Transition Hub

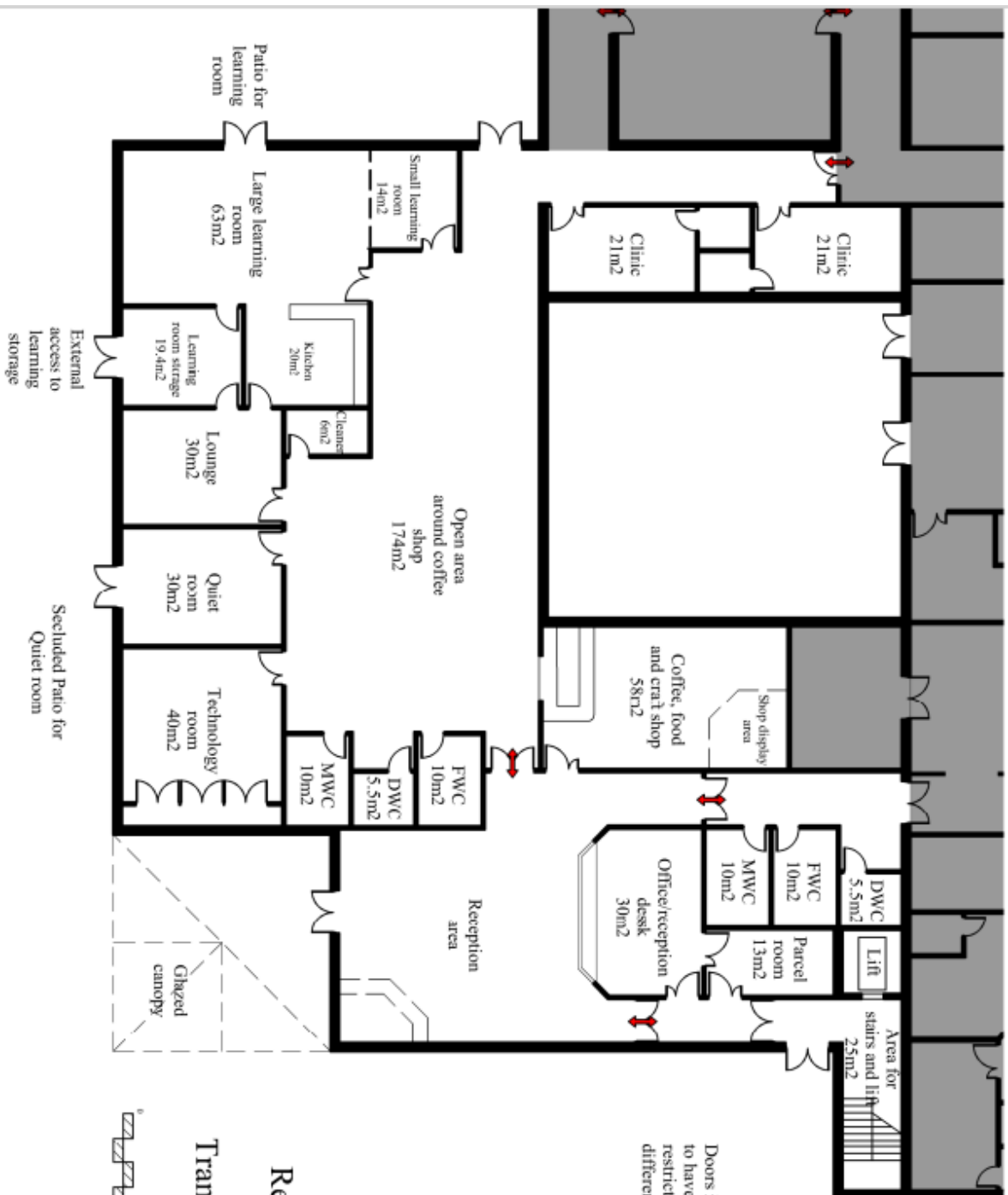
From the detailed room and facilities requirements within the Feasibility Report (<https://www.sparkleappeal.org/ckfinder/userfiles/files/Final%20Phase%201%20Feasibility%20report.docx>), a concept design has been prepared. This is laid out below.


Outdoor area



Ground Floor

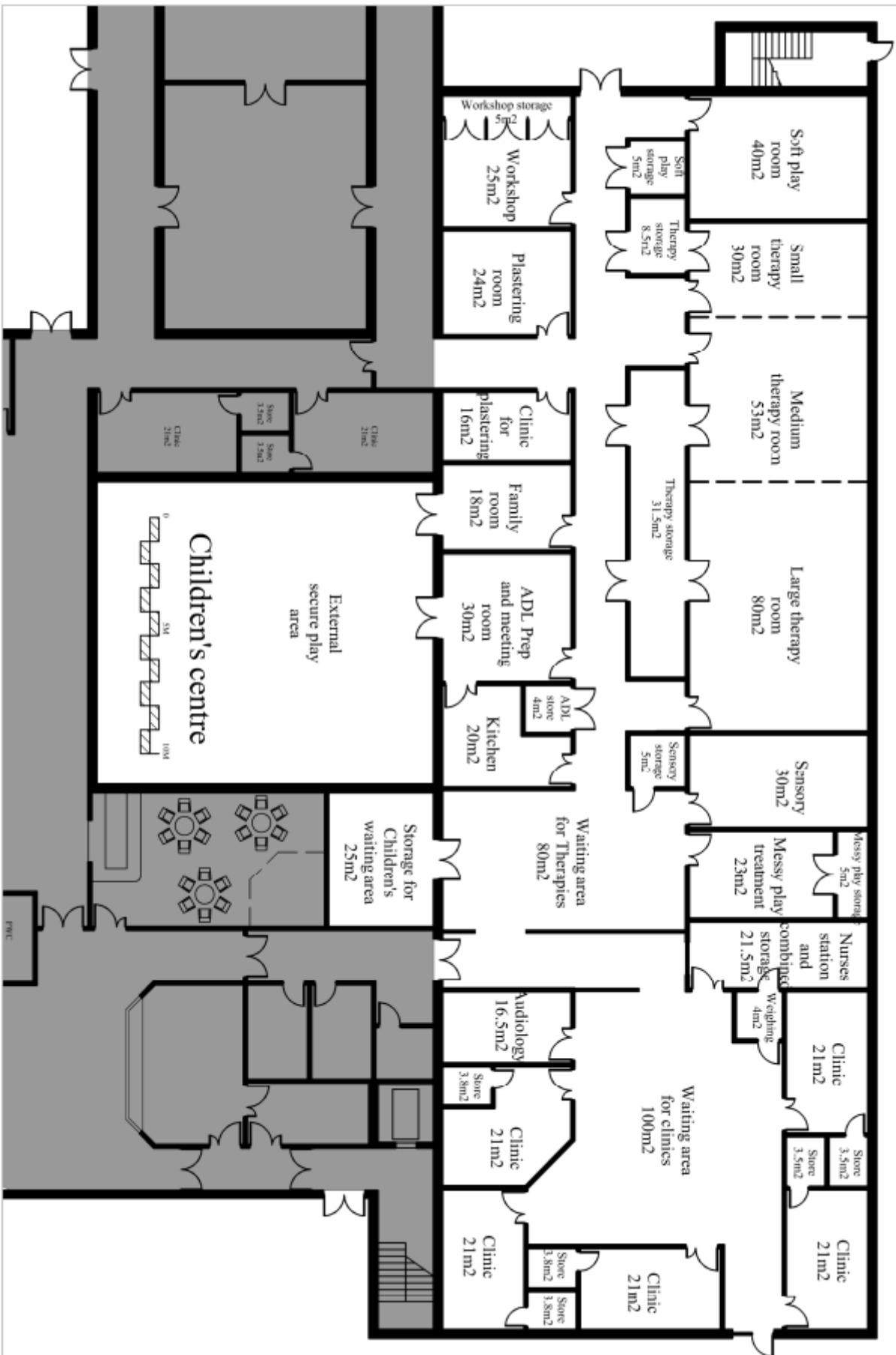




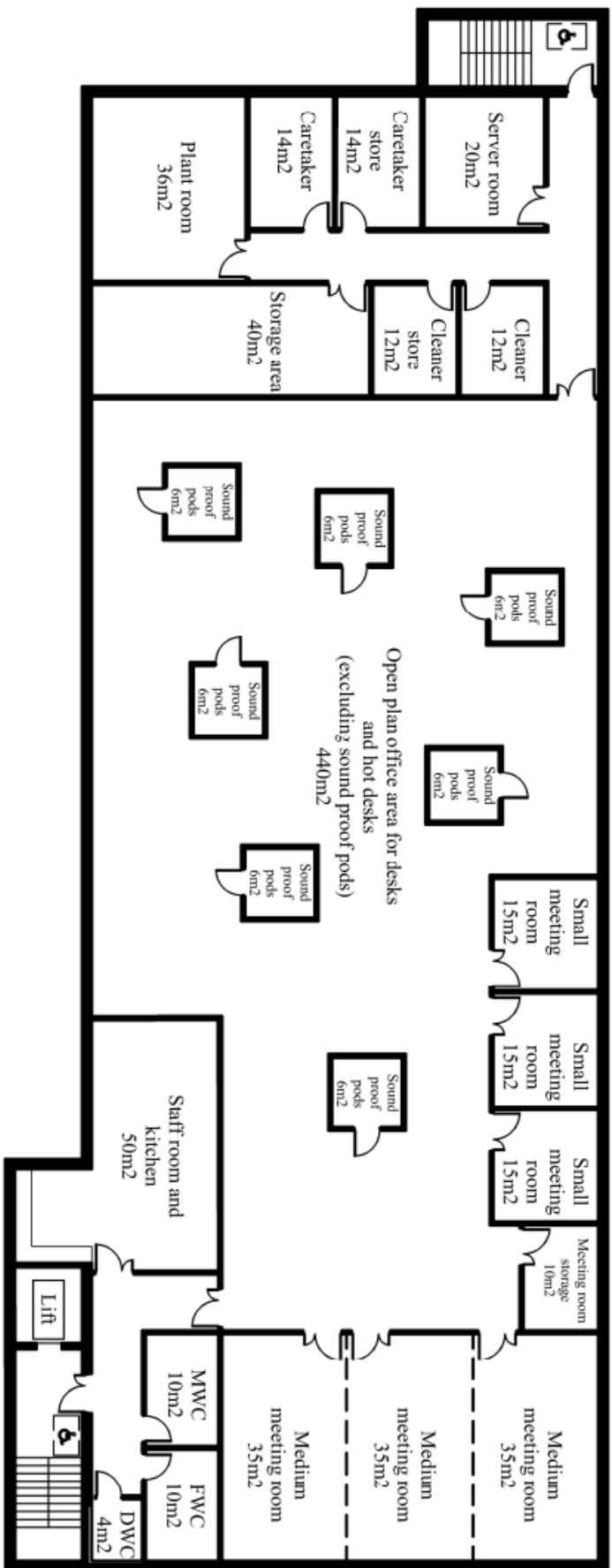
Doors indicated thus:  to have door entry control to restrict access between different areas.

Reception and Transition hub





First Floor



First floor offices

