



# sparkle

helpu plant arbennig i ddisgleirio  
helping special children shine

April 2024

## Dear Sparkle families,

Following our recent restructuring exercise due to funding challenges, we are pleased to share that we have received a number of donations and have gained a dedicated parent fundraising committee that we are currently seeking additional volunteers for.

Due to the generosity of the MediCinema charity, we are also able to maintain 3 screenings per week at Serennu Children's Centre after an uncertain few months. We know how many children, young people and families enjoy the films that are shown in our beautiful cinema.

Looking towards the future, Sparkle is very keen to share what it does with other organisations across Wales and the UK through a tour video and four webinars that have recently been developed and can be found on the Sparkle website.

Sparkle is a charity that is 100% there to support you, our Sparkle families, and we welcome any feedback that you can give us to ensure that we continue to develop & deliver services that meet your needs.

-Janet Kelly, Sparkle Chair

## Save the date...

Sun 7th Apr  
Belle Vue market  
(In support of Sparkle)

Wed 10th Apr  
SNAP drop-in  
@ NHCC

Fri 12th Apr  
Coffee group  
@ SCC

Sat 13th Apr  
Dads group  
@ SCC

Thurs 18th Apr  
ADHD+ support  
@ SCC

Thurs 18th Apr  
SNAP drop-in  
@ CCC

Mon 22nd Apr  
ADHD+ support  
@ SCC

Tues 23rd Apr  
Coffee support  
@ Blaina ICC

Sat 27th Apr  
Coffee support  
@ CCC

Sat 23rd Mar  
CCP: intro to sleep  
(workshop)

## Watch our webinars!

Working with **As You See It Media**, Sparkle has recently produced a series of webinars on the innovative model of care and services we have helped develop.

We hope these webinars will be spread far and wide to help inform the development of similar models and support services for children with disabilities and their families across the UK. **Please feel free to share them with others.**

You can watch our webinars under the 'about' section on our website...  
[www.sparkleappeal.org](http://www.sparkleappeal.org).

Thanks to As You See It Media, we also have a fantastic video tour of Serennu Children's Centre on the home page of our website, explaining how the building was designed and showcasing the amazing facilities.



If you would like more information on any upcoming events or if you would like any further support, please get in touch with our Family Liaison Officers...

**SCC**  
[family.liaison.abb@wales.nhs.uk](mailto:family.liaison.abb@wales.nhs.uk)

**NHCC -**  
[abb.familyliaisonnorth@wales.nhs.uk](mailto:abb.familyliaisonnorth@wales.nhs.uk)

**CCC**  
[abb.familyliaisonwest@wales.nhs.uk](mailto:abb.familyliaisonwest@wales.nhs.uk)

# Big Kev's Ride - September 2024

Our friends at Ordinary 2 Extraordinary (O2e) are currently organising their 16th annual cycling challenge to fundraise for nominated charities.

This year, O2e's cycling challenge is a two and a half day ride from Dunkirk to one of Northern France's most beautiful seaside resorts that is renowned for its pretty architecture, wooded avenues, golf courses and equestrian facilities. A truly lovely location for such a challenge!

O2e has been a huge supporter of Sparkle over the years. Over the last 4 years alone, we have received over £80,000 from O2e!

If you are interested in taking part in O2e's fundraising bike ride this September, please visit their website: [o2e.org](https://o2e.org).

You can find out about all of the fundraising activities our friends at O2e have planned by visiting the O2e website.



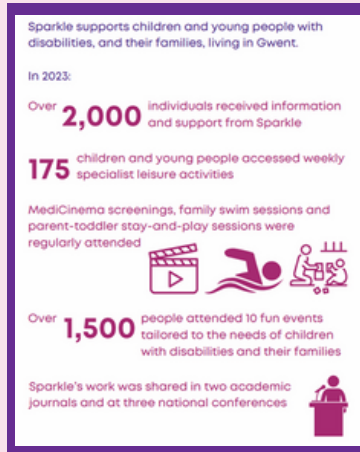
## How did we do?

Our Impact Report for 2023 has recently been shared on Sparkle's website.

This report details how we have helped hundreds of families with children with disabilities over the last year, including: the support offered by the Family Liaison Service; what children and families gained from our specialist leisure activities and family events; how young people thrived on our summer residential trip; and how we shared our research findings with professionals across the UK.

Read more:

[www.sparkleappeal.org/research](https://www.sparkleappeal.org/research)



## Are you interested in fundraising for Sparkle?

Email [fundraising@sparkleappeal.org](mailto:fundraising@sparkleappeal.org)  
or  
call 01633 748041  
to learn more or get started.

## Find us online!

- Sparkle
- @sparkleappealofficial
- [justgiving.com/sparkleappeal](https://justgiving.com/sparkleappeal)
- [www.sparkleappeal.org](https://www.sparkleappeal.org)

- @sparkleappeal
- 

## Did you know?

Sparkle needs to raise over **£750,000** a year in order to maintain the support and leisure services it provides to 935 children, young people and their families.

As costs rise, so does the number of children and young people that are added to our waiting lists each week.

As well as donations and grants, we are reliant on individual and team fundraisers, which are key contributors toward our annual fundraising goal.

Fundraising will secure existing services - none of which are provided through health care - and help us to support even more children and young people who need us.

**Disclaimer:** The information in this newsletter has been reproduced from the sender in good faith and is not necessarily the view of Sparkle (South Wales) Ltd.